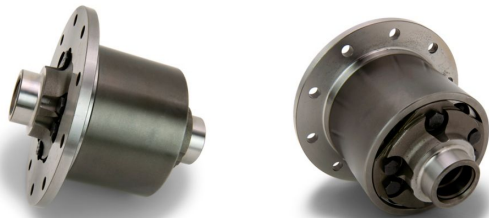


Specifications



Photo is representative



Eaton 912A616

DETROIT TRUETRAC® DIFFERENTIAL; FORD
8.0 IN.; 28 SPLINE; 3.25 AND UP

General specifications

PRODUCT NAME	Eaton Detroit Truetrac Differential
CATALOG NUMBER	912A616
PRODUCT WEIGHT	16.27 lb
CATALOG NOTES	Bearing LM102949 and race LM102910 are required.



Powering Business Worldwide

Product specifications

RING GEAR RATIO	3.25 & up
GEAR SPLINE TOOTH COUNT	28 EA
AXLE SHAFT DIAMETER	1.2 in
RING GEAR SIZE	8 in
DIFFERENTIAL TYPE	Limited Slip (LSD)

VEHICLE USAGE	On Road: Work Truck / Towing Off-Road: Work Truck / Towing On Road: Circle Track On Road: Drag Racing On Road: Street and Muscle Off-Road: Extreme Off-Road Off-Road: Light Trail / Sand Sports On Road: Restoration Off-Road: Rock Crawl
----------------------	---

Resources

BROCHURES	Eaton Performance brochure Detroit Truetrac brochure
CATALOGS	Eaton Performance differential application guide
MANUALS AND USER GUIDES	Eaton Performance differentials owners manual
WARRANTY GUIDES	Differential Limited Warranty and Limitations Statement

PROJECT NAME:

PROJECT NUMBER:

PREPARED BY:

DATE:



Eaton Corporation plc

Eaton House
30 Pembroke Road
Dublin 4, Ireland
Eaton.com

© 2025 Eaton. All Rights Reserved.

Follow us on social media to get the latest product and support information.

